

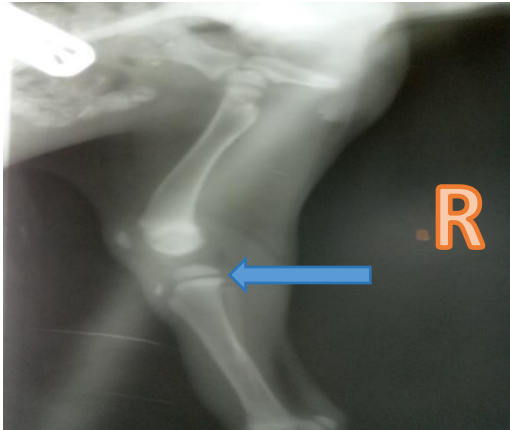
**SOME OF THE REPRESENTATIVE PICTURES AS REQUESTED BY  
REVIEWER 4.**



**Plate 1: Pelvic limb of a horse with a well developed calcaneus tube**



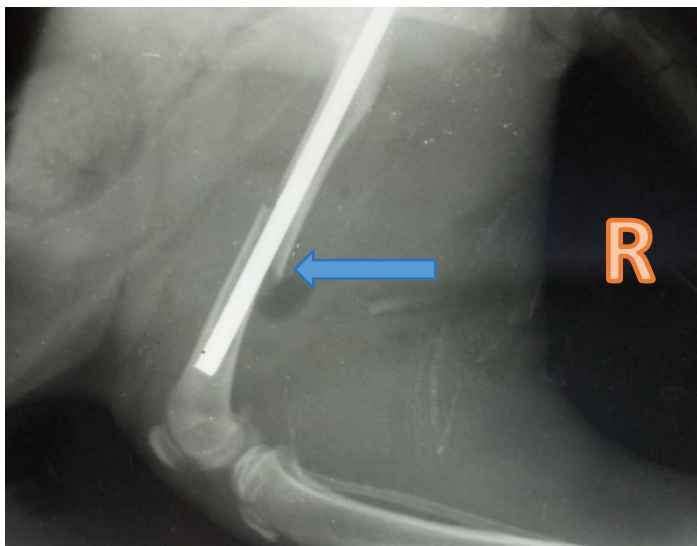
**Plate 2: Pelvic limb of a cat**



**Plate 3: A radiograph of a young dog showing an incomplete fusion of bone plate**



**Plate 4: showing and image of an X-ray unit at diagnostic imaging Centre of ABUVTH**



**Plate 5: A radiograph showing a fracture that was managed with intramedullary pin**